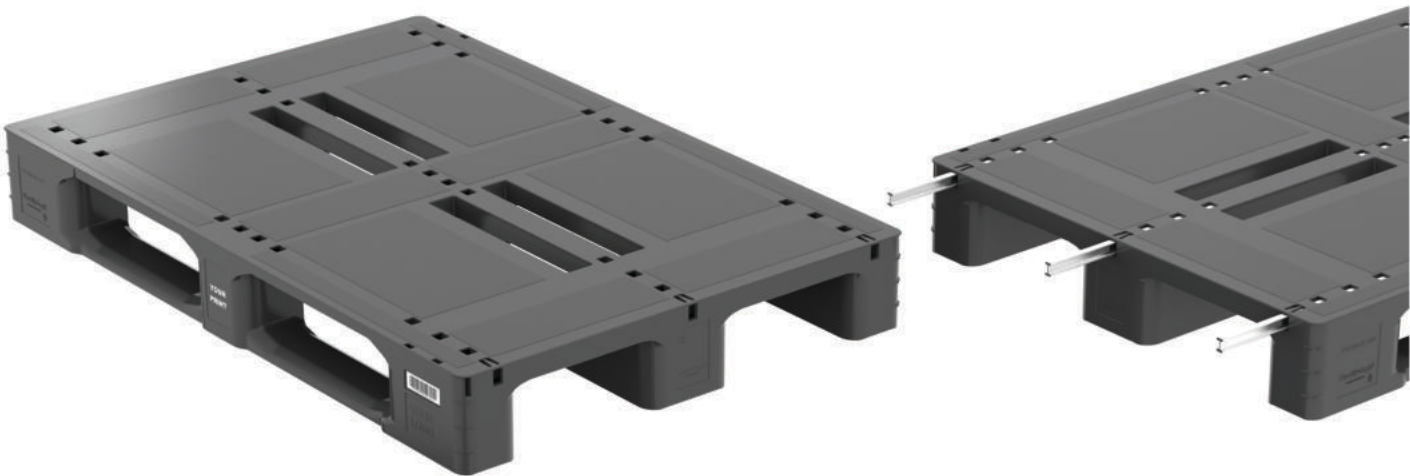


PG 1208M-CD

Plastic pallets

Mid-weight 1200x800mm closed-deck pallet

Robust all-rounder with wide list of available options including steel reinforcements and ESD material. Closed deck protects products from damage and dirt below.



DETAILS



SPECIFICATIONS

Dimensions: 1200x800x150mm (±5 mm)

Weight: 13 kg ± 3%

Static load: 4500 kg / 5000 kg (with 3 steel bars)

Dynamic load: 1500 kg / 2000 kg (with 3 steel bars)

High rack: 600 kg / 1000 kg (with 3 steel bars)

Material: r-PE, HDPE

Truck:  88m³    

Stack: 16 pcs 19 pcs

Stack height: 2450 mm 2900 mm

Truck capacity: 528 pcs 722 pcs

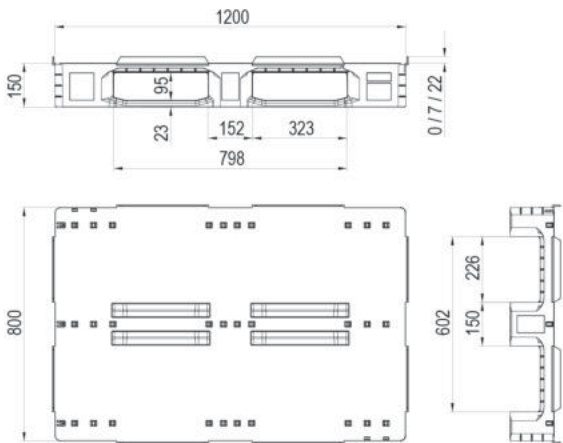
PROPERTIES

- 3 skids unwelded
- Smooth surfaces and mostly closed deck for easy cleaning and goods protection
- Weatherproof; UV and chemical resistant;
- RFID chip nest
- 100% Recyclable
- Additional features to fix packaging films
- Rounded edges on all sides of the skids

OPTIONS

- Any standard RAL color
- Individual marking
- 3 steel reinforcement bars
- 0 / 7 / 22 mm safety rim
- ESD material
- Anti slip Rubber plugs on bottom side

STANDARD COLORS





PlastikGogić

MNG Plastik Gogić doo Indjija
22320 Indjija, Kralja Petra I 227, SERBIA
+381 (22) 561-674 ; 555-306

office@plastikgogic.rs
www.plastikgogic.rs

