

# PlastikGogic

BROCHURE 2026

**AGRICULTURE  
INDUSTRY  
LOGISTICS**





# Moving What Matters



# Family values



## Founded in 1974

Plastik Gogić is a leading provider of injection-moulded plastic products, employing over 270 people and operating in 70+ countries.

## Our Mission

Delivering high-quality plastic products while supporting employees, protecting the environment, and strengthening global partnerships.



## What do we produce?

Plastik Gogić delivers a wide range of high-quality solutions to partners in over 70 countries.

### Packaging

Plastic pallets, pallet boxes, crates, vats and other versatile solutions for storage, industrial handling, agriculture and food processing.

### Waste Management

Durable waste bins and containers for urban, public, and commercial use.

### Sports

Multifunctional flooring and stadium seating, designed for comfort and long-lasting performance.

## Constant growth and development

Year after year, Plastik Gogić achieves strong growth and continues to expand its capabilities.

## Production

Automated manufacturing with advanced machines, offering up to 5,500 tons of clamping force.

## Certificates and awards

Our products comply with EN 840, GS mark, and other technical standards, while our management systems are certified to ISO 9001, ISO 14001, and ISO 45001, ensuring the highest standards in quality, safety, and environmental care.

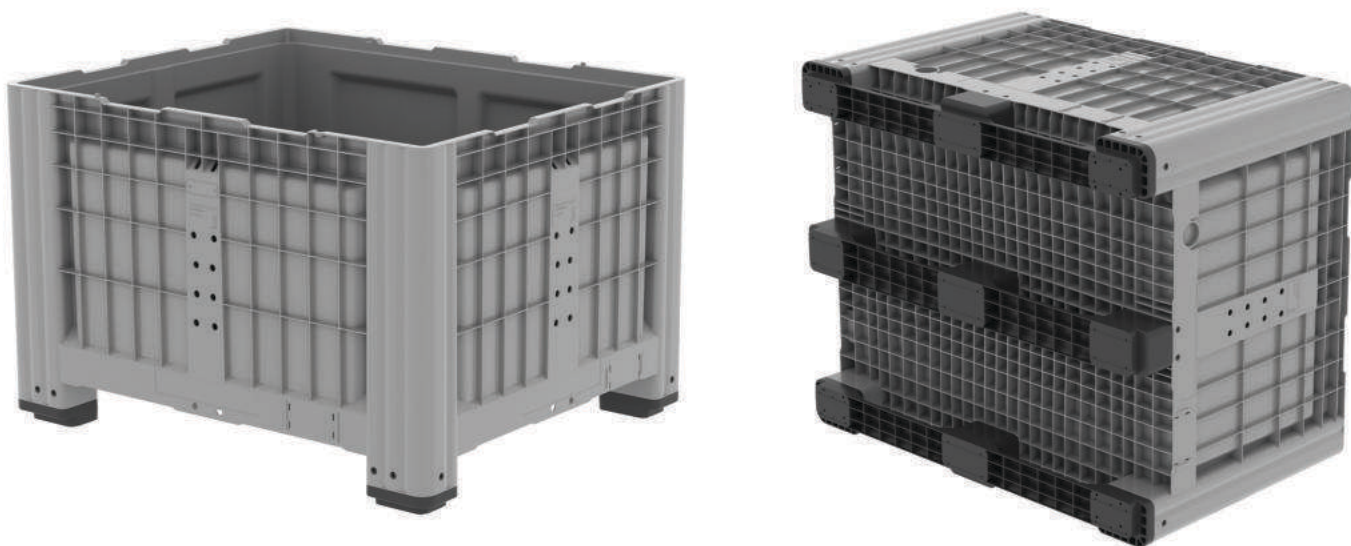
Plastik Gogić is also a proud recipient of numerous awards, recognized for business excellence and its positive impact on society.

# PG 785B-S

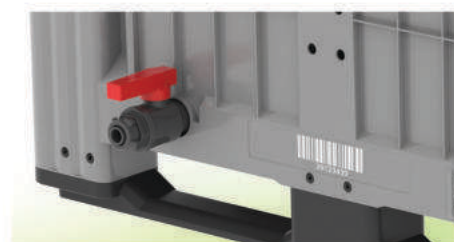
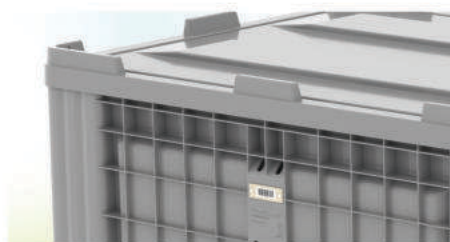
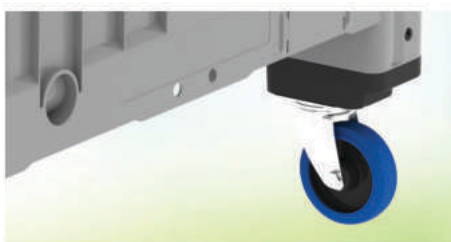
Box pallets

## Big Box Solid

Closed walls and bottom, ideal for transport and storage in food industry.



### DETAILS



### SPECIFICATIONS

Dimensions: 1200x1000x785mm (±5mm)

Volume: 690 lit

Max Load per box: 500 kg

Max static load: 5000 kg

Weight: 4 feet 33 kg ± 3%

2 skids 37 kg ± 3%

3 skids 40 kg ± 3%

Lid weight (option): 7.5 kg ± 3%

Material: HDPE

Truck:  mega H=3.05m 

Truck capacity: 156 pcs 168 pcs (4 feet)  
130 pcs 140 pcs (2 ili 3 skids)

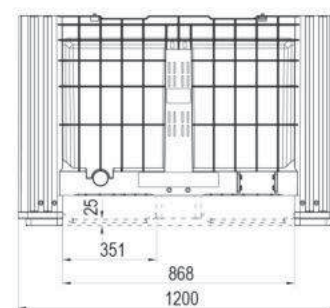
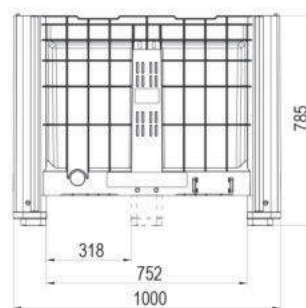
### PROPERTIES

- Stackable
- Smooth inner walls for easy cleaning
- Stack antislip protection
- Improved strength and impact resistant
- Weatherproof; UV and chemical resistant;
- Food safe
- 2 lateral tap openings, fi 55mm
- 100% Recyclable

### OPTIONS

- Any standard RAL color
- Embossed marking
- QR code, numbering and text thermal transfer
- Transponder-ready
- Versions: 4 feet, 2 skids, 3 skids, 4 wheels (reduced load capacity)

### STANDARD COLORS



# PG 785B

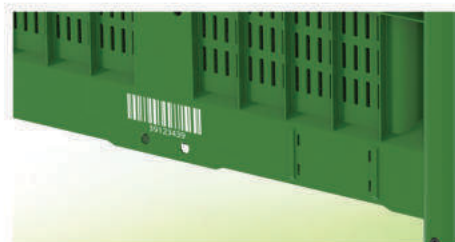
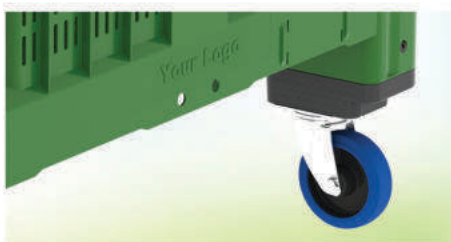
Box pallets

## Big Box

Perforated walls and bottom for optimal airflow. Ideal for transport and storage of fruit and vegetables.



### DETAILS



### SPECIFICATIONS

Dimensions: 1200x1000x785mm (±5 mm)

Volume: 690 lit

Max Load per box: 500 kg

Max static load: 5000 kg

Weight: 4 feet 31 kg ± 3%

2 skids 34 kg ± 3%

3 skids 37 kg ± 3%

Lid weight (option): 7.5 kg ± 3%

Material: HDPE

Truck:  mega H=3.05m 

Truck capacity: 156 pcs 168 pcs (4 feet)  
130 pcs 140 pcs (2 or 3 skids)

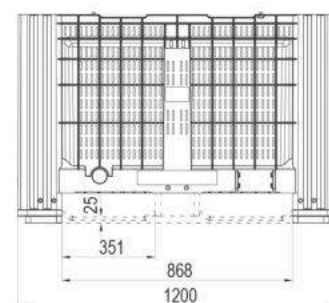
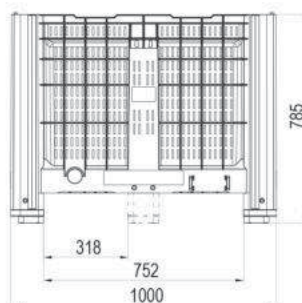
### PROPERTIES

- Stackable
- Smooth inner walls for easy cleaning
- Stack antislip protection
- Improved strength and impact resistant
- Weatherproof; UV and chemical resistant;
- Food safe
- 100% Recyclable

### OPTIONS

- Any standard RAL color
- Embossed marking
- QR code, numbering and text thermal transfer
- Transponder-ready
- Versions: 4 feet, 2 skids, 3 skids, 4 wheels (reduced load capacity)
- Lid

### STANDARD COLORS

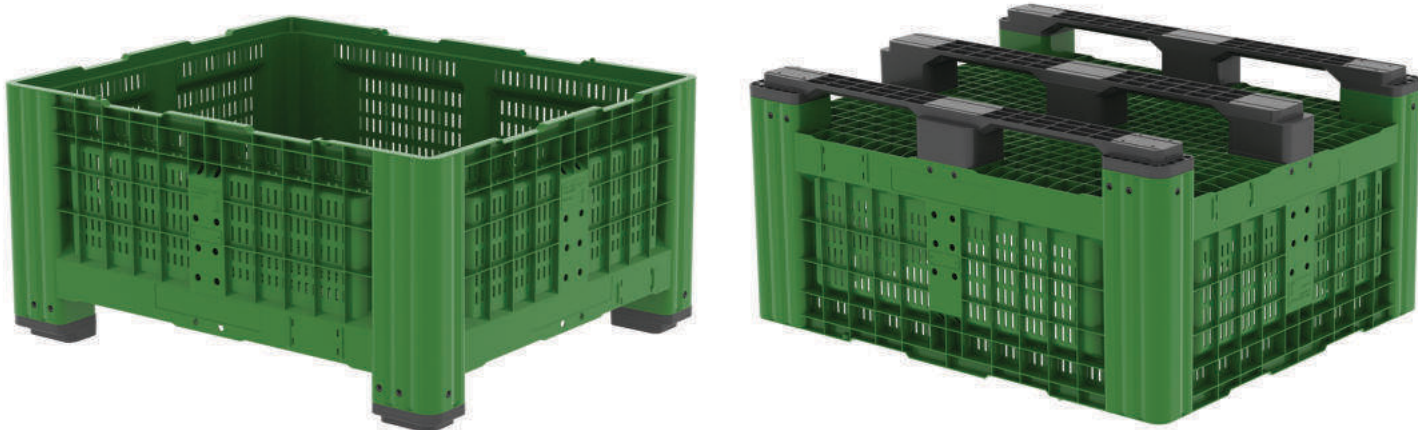


# PG 580B

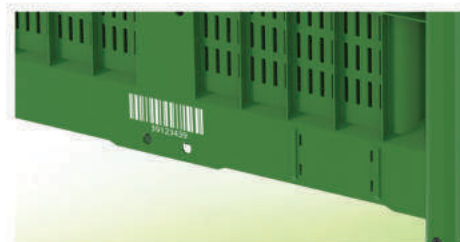
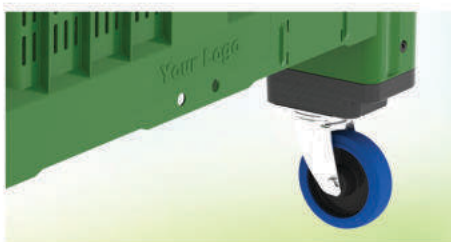
Box pallets

## Big Box

Perforated walls and bottom for optimal airflow. Ideal for transport and storage of fruit and vegetables.



### DETAILS



### SPECIFICATIONS

Dimensions: 1200x1000x580mm (±5 mm)

Volume: 450 lit

Max Load per box: 500 kg

Max static load: 5000 kg

Weight: 4 feet 26 kg ± 3%

2 skids 28 kg ± 3%

3 skids 31.5 kg ± 3%

Lid weight (option): 7.5 kg ± 3%

Material: HDPE

Truck: [mega H=3.05m](#)  

Truck capacity: 130 pcs 140 pcs (4 feet)  
130 pcs 140 pcs (2 or 3 skids)

### OPTIONS

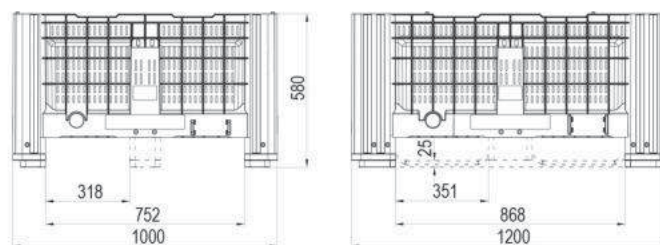
- Any standard RAL color
- Embossed marking
- QR code, numbering and text thermal transfer
- RFID Transponder-ready
- Versions: 4 feet, 2 skids, 3 skids, 4 wheels (reduced load capacity)

### STANDARD COLORS



### PROPERTIES

- Stackable
- Smooth inner walls for easy cleaning
- Stack antislip protection
- Improved strength and impact resistant
- Weatherproof; UV and chemical resistant;
- Food safe
- 100% Recyclable



# PG 785A

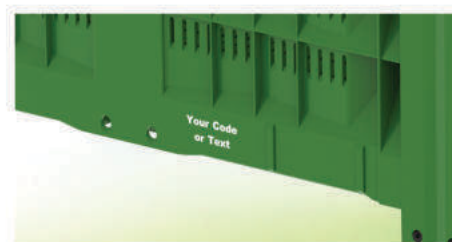
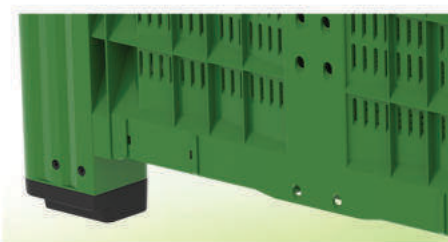
Box pallets

## Big Box

Perforated walls and bottom for optimal airflow. Ideal for transport and storage of fruit and vegetables.



### DETAILS



### SPECIFICATIONS

Dimensions: 1200x1000x785mm (±5 mm)

Volume: 690 lit

Max Load per box: 500 kg

Max static load: 5000 kg

Weight: 4 feet 36 kg ± 3%

2 skids 38.5 kg ± 3%

Lid weight (option): 7.5 kg ± 3%

Material: HDPE

Truck: [mega H=3.05m](#)   

Truck capacity: 140 pcs 168 pcs (4 feet)  
130 pcs 156 pcs (2 skids)

### OPTIONS

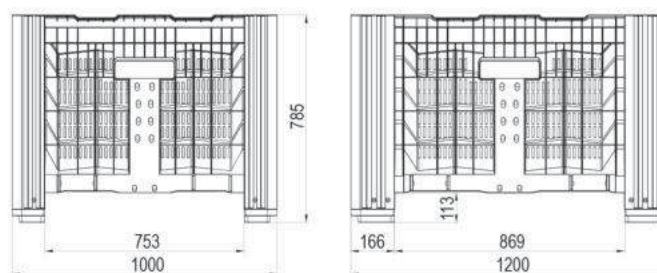
- Any standard RAL color
- Embossed marking
- QR code, numbering and text thermal transfer
- Versions: 4 feet, 2 skids
- Lid

### STANDARD COLORS



### PROPERTIES

- Stackable
- Smooth inner walls for easy cleaning
- Stack antislip protection
- Improved strength and impact resistant
- Weatherproof; UV and chemical resistant; Pest resistant
- Food safe
- 100% Recyclable

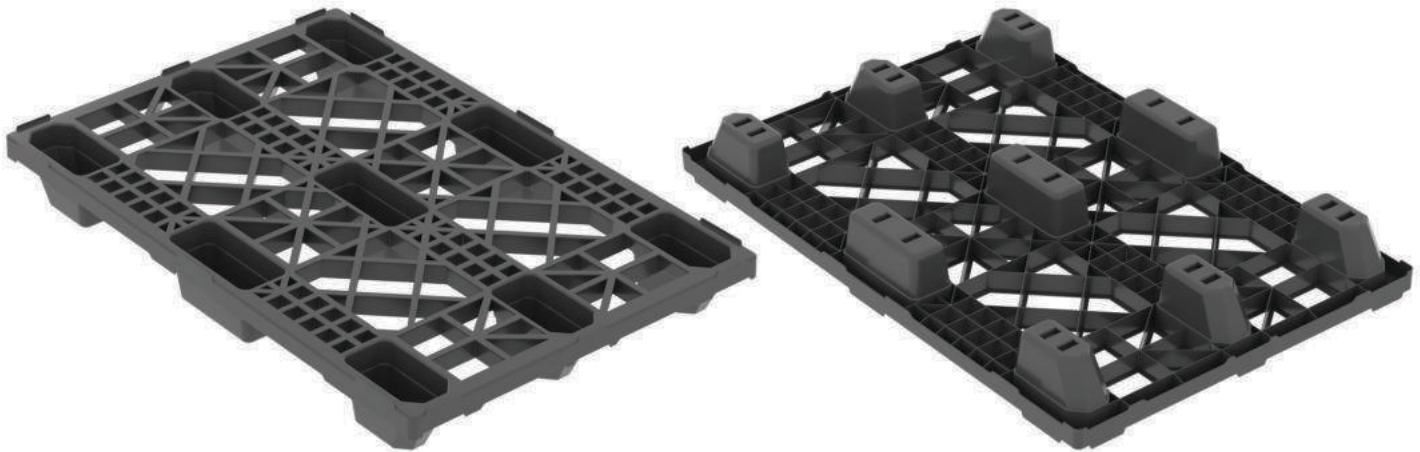


# PG 1208L-OD

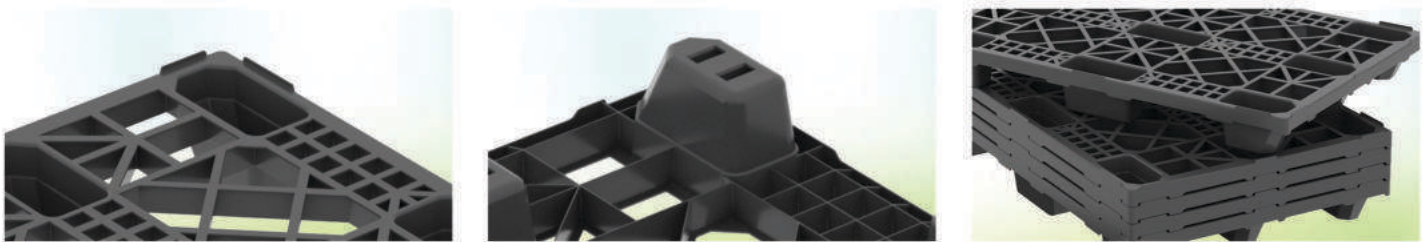
Plastic pallets

## Nestable 1200x800mm light pallet

Easy to handle, light weight, nestable "euro-size" pallet.



### DETAILS



### SPECIFICATIONS

Dimensions: 1200x800x130mm (±5 mm)

Weight: 4.8 kg ± 3%

Static load\*: 2000 kg

Dynamic load\*: 700 kg

Material: r-PO, HDPE

Truck:  mega H=3.05m 

Stack: 62 pcs 62 pcs

Stack height: 2880 mm 2880 mm

Truck capacity: 2108 pcs 2356 pcs

\* uniformly distributed load

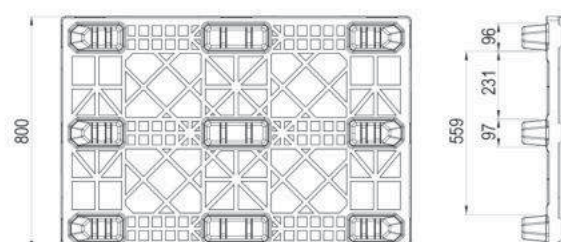
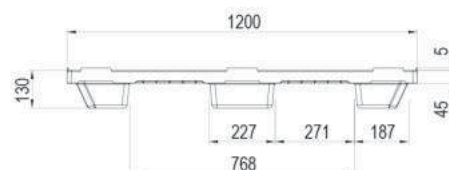
### PROPERTIES

- Nestable
- 5mm Safety rim
- 9 Feet
- Weatherproof; UV and chemical resistant;
- 100% Recyclable

### OPTIONS

- Any standard RAL color
- Individual marking

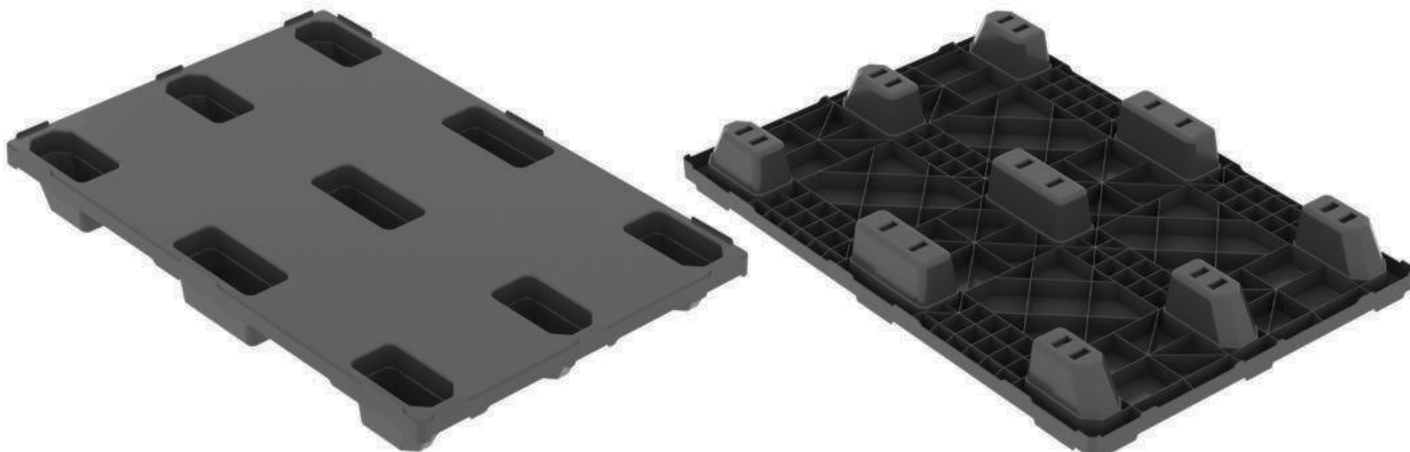
### STANDARD COLORS



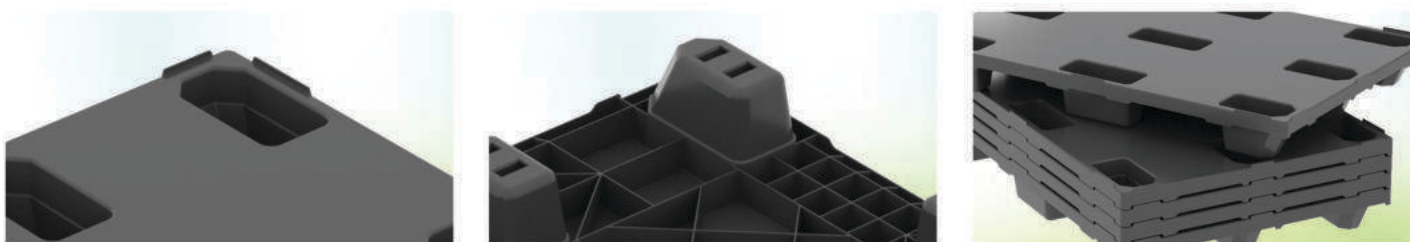
# PG 1208L-CD

## Nestable 1200x800mm light closed-deck pallet

Easy to handle light weight nestable "euro-size" pallet. Closed deck protects products from damage and dirt below.



### DETAILS



### SPECIFICATIONS

Dimensions: 1200x800x130mm (±5 mm)

Weight: 5.8 kg ± 3%

Static load\*: 2000 kg

Dynamic load\*: 700 kg

Material: r-PO, HDPE

Truck:  mega H=3.05m  

Stack: 62 pcs 62 pcs

Stack height: 2880 mm 2880 mm

Truck capacity: 2108 pcs 2356 pcs

\* uniformly distributed load

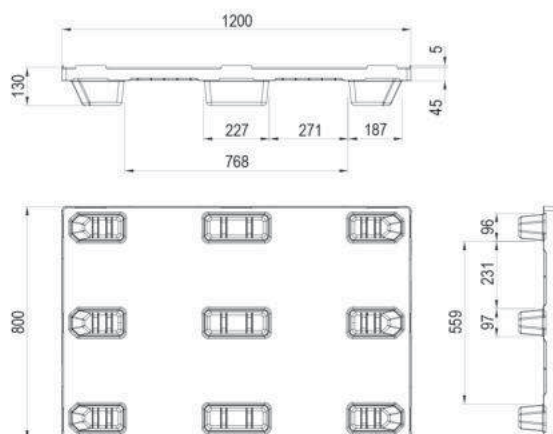
### PROPERTIES

- Nestable
- 5mm Safety rim
- 9 Feet
- Weatherproof; UV and chemical resistant;
- 100% Recyclable

### OPTIONS

- Any standard RAL color
- Individual marking

### STANDARD COLORS



# PG 1210L-OD

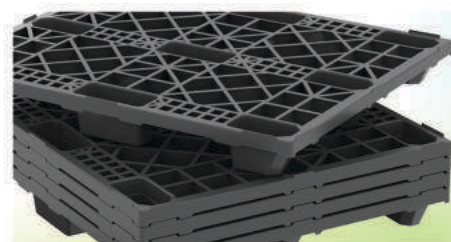
Plastic pallets

## Nestable 1200x1000mm light pallet

Easy to handle light weight nestable "industrial-size" pallet.



### DETAILS



### SPECIFICATIONS

Dimensions: 1200x1000x130mm ( $\pm 5$  mm)

Weight: 5.2 kg  $\pm$  3%

Static load\*: 2000 kg

Dynamic load\*: 700 kg

Material: r-PO, HDPE

Truck: [mega H=3.05m](#)   

Stack: 62 pcs 62 pcs

Stack height: 2880 mm 2880 mm

Truck capacity: 1612 pcs 1736 pcs

\* uniformly distributed load

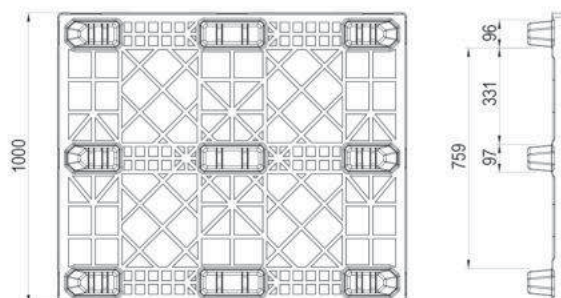
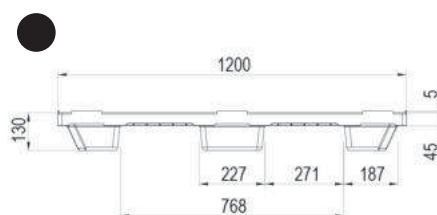
### PROPERTIES

- Nestable
- 5mm Safety rim
- 9 Feet
- Weatherproof; UV and chemical resistant;
- 100% Recyclable

### OPTIONS

- Any standard RAL color
- Individual marking

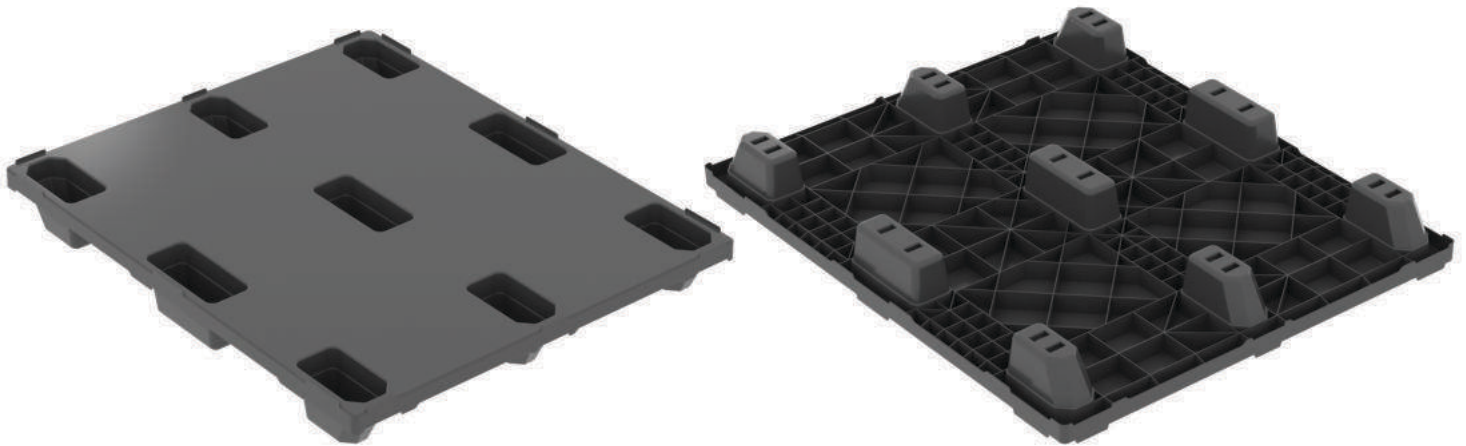
### STANDARD COLORS



# PG 1210L-CD

## Nestable 1200x1000mm light closed-deck pallet

Easy to handle light weight nestable "industrial-size" pallet. Closed deck protects products from damage and dirt below.



### DETAILS



### SPECIFICATIONS

Dimensions: 1200x1000x130mm (±5 mm)

Weight: 6.8 kg ± 3%

Static load\*: 2000 kg

Dynamic load\*: 700 kg

Material: r-PO, HDPE

Truck:  mega H=3.05m  

Stack: 62 pcs 62 pcs

Stack height: 2880 mm 2880 mm

Truck capacity: 1612 pcs 1736 pcs

\* uniformly distributed load

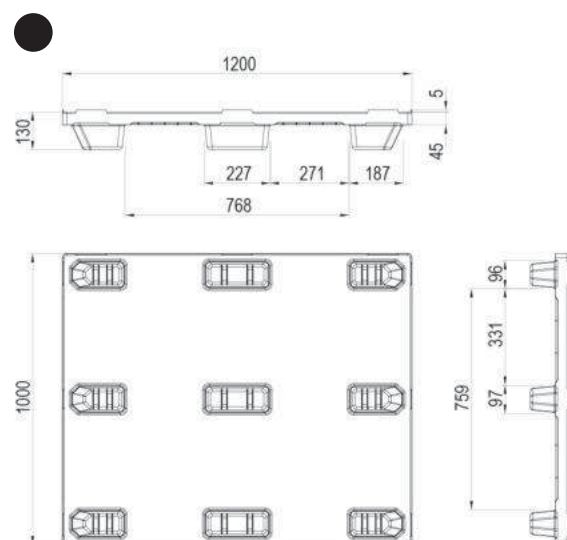
### PROPERTIES

- Nestable
- 5mm Safety rim
- 9 Feet
- Weatherproof; UV and chemical resistant;
- 100% Recyclable

### OPTIONS

- Any standard RAL color
- Individual marking

### STANDARD COLORS



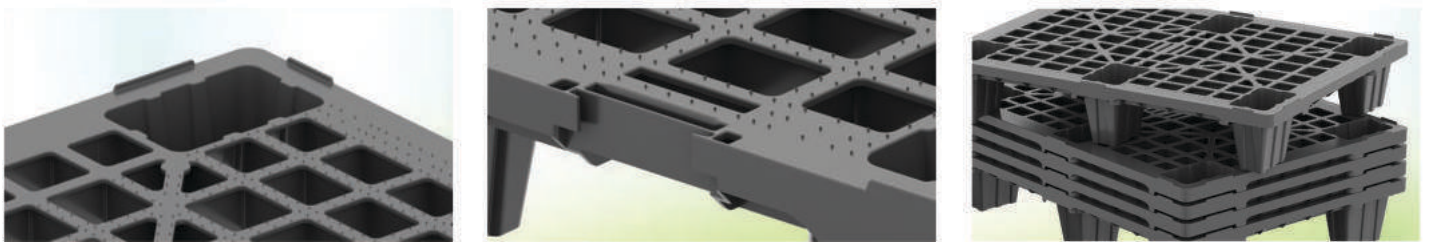
# PG 8060L-OD

## Nestable 800x600mm light pallet

Easy to handle light weight nestable half pallet.



### DETAILS



### SPECIFICATIONS

Dimensions: 800x600x136mm (±5 mm)

Weight: 3 kg ± 3%

Static load\*: 2000 kg

Dynamic load\*: 700 kg

Material: r-PO, HDPE

Truck:  mega H=3.05m  

Stack: 80 pcs 80 pcs

Stack height: 2906 mm 2906 mm

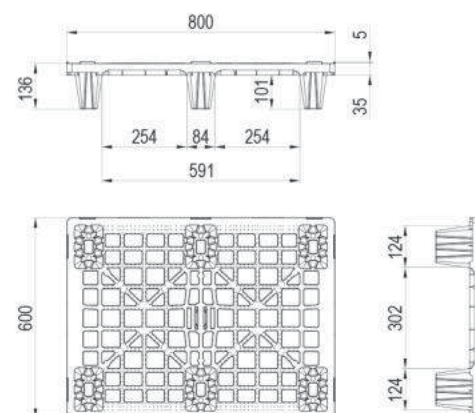
Truck capacity: 5440 pcs 6080 pcs

\* uniformly distributed load

### OPTIONS

- Any standard RAL color
- Individual marking
- 5mm safety rim
- Display inserts

### STANDARD COLORS



### PROPERTIES

- Nestable
- 6 Feet
- Anti slip studs on top deck
- Weatherproof; UV and chemical resistant;
- 100% Recyclable

# PG 1208M-CD

Plastic pallets

## Mid-weight 1200x800mm closed-deck pallet

Robust all-rounder with wide list of available options including steel reinforcements and ESD material. Closed deck protects products from damage and dirt below.



### DETAILS



### SPECIFICATIONS

Dimensions: 1200x800x150mm (±5 mm)

Weight: 13 kg ± 3%

Static load\*: 4500 kg / 5000 kg (with 3 steel bars)

Dynamic load\*: 1500 kg / 2000 kg (with 3 steel bars)

High rack\*: 600 kg / 1000 kg (with 3 steel bars)

Material: r-PO, HDPE

Truck: [mega H=3.05m](#)   

Stack: 19 pcs 19 pcs

Stack height: 2900 mm 2900 mm

Truck capacity: 646 pcs 722 pcs

\* uniformly distributed load

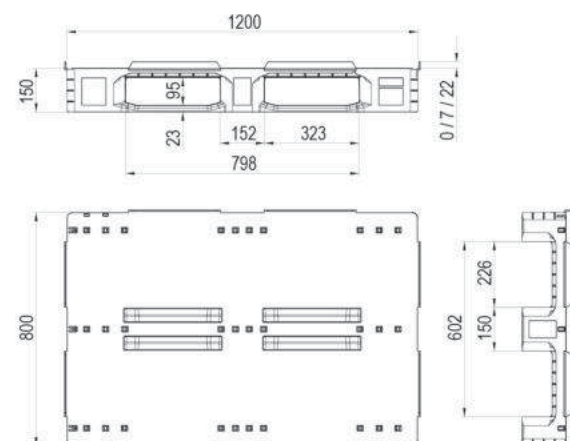
### PROPERTIES

- 3 skids unwelded
- Smooth surfaces and mostly closed deck for easy cleaning and goods protection
- Weatherproof; UV and chemical resistant;
- RFID chip nest
- 100% Recyclable
- Additional features to fix packaging films
- Rounded edges on all sides of the skids

### OPTIONS

- Any standard RAL color
- Individual marking
- 3 steel reinforcement bars
- 0 / 7 / 22 mm safety rim
- ESD material
- Anti slip Rubber plugs on bottom side

### STANDARD COLORS

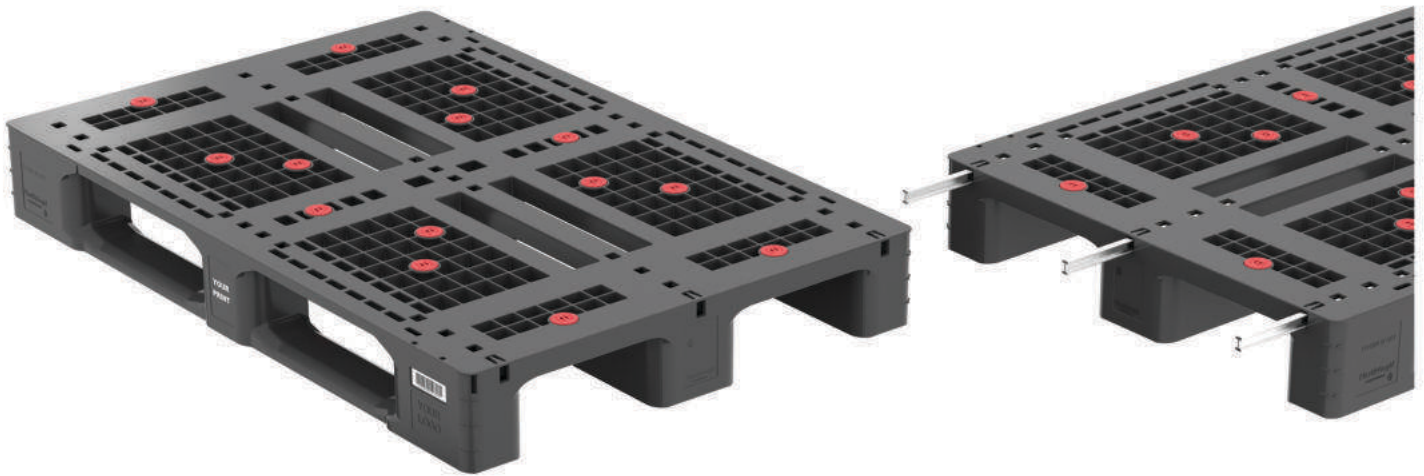


# PG 1208M-OD

Plastic pallets

## Mid-weight 1200x800mm open deck pallet

Robust all-rounder with wide list of available options including steel reinforcements and ESD material.



### DETAILS



### SPECIFICATIONS

Dimensions: 1200x800x150mm (±5 mm)

Weight: 12 kg ± 3%

Static load\*: 4500 kg / 5000 kg (with 3 steel bars)

Dynamic load\*: 1500 kg / 2000 kg (with 3 steel bars)

High rack\*: 500 kg / 900 kg (with 3 steel bars)

Material: r-PO, HDPE

Truck:  mega H=3.05m  

Stack: 19 pcs 19 pcs

Stack height: 2900 mm 2900 mm

Truck capacity: 646 pcs 722 pcs

\* uniformly distributed load

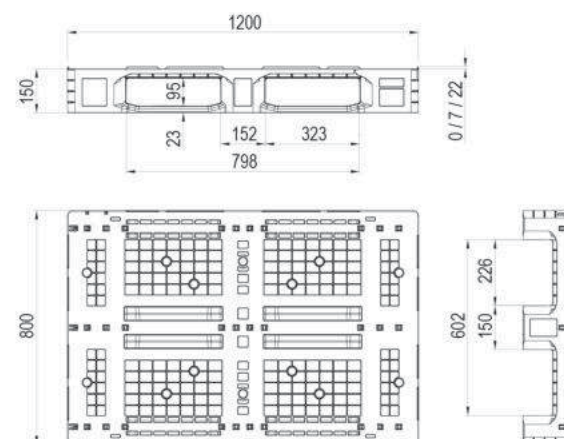
### PROPERTIES

- 3 skids unwelded
- Smooth surfaces
- Weatherproof; UV and chemical resistant;
- RFID chip nest
- 100% Recyclable
- Additional features to fix packaging films
- Rounded edges on all sides of the skids

### OPTIONS

- Any standard RAL color
- Individual marking
- 3 steel reinforcement bars
- 0 / 7 / 22 mm safety rim
- ESD material
- Anti slip Rubber plugs on both sides

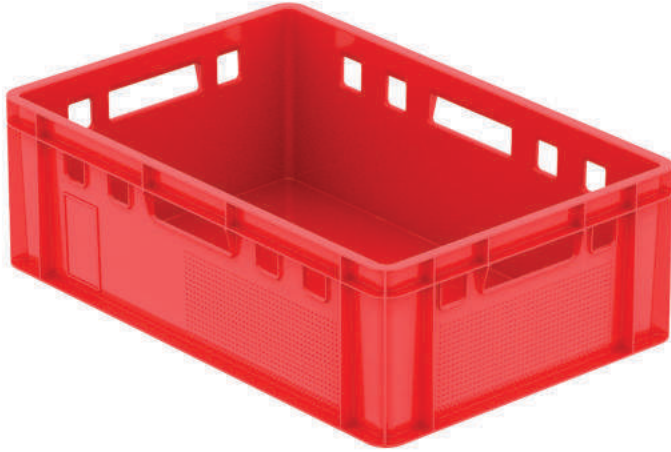
### STANDARD COLORS





# PG E-2

## Crate E2 original

E-2 Meat Crate (DIN 55423) made from durable virgin HDPE ensures safe, hygienic storage and transport of meat and food products. Its impact-resistant, easy-to-clean design, efficient stackability, and full cross-compatibility with pooled reusable systems support both operational efficiency and circular-economy use.



Truck:	mega H=3.05m  	
Stack:	60 pcs	60 pcs
Stack height:	2962 mm <small>on pallet 1200x800x130 mm</small>	2962 mm <small>on pallet 1200x800x130 mm</small>
Truck capacity:	2040 pcs	2280 pcs

### STANDARD COLORS



\*As option any standard RAL color

### SPECIFICATIONS

Outer dimensions\*: 600x400x200 mm

Internal dimensions\*: 570x370x197 mm

\*tolerances according to DIN 55423-1

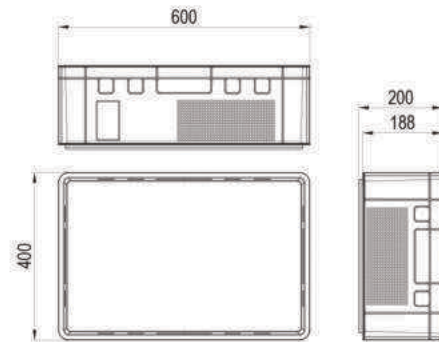
Stacking height: 188mm

Weight: 2 kg ± 3%

Volume: 30 lit

Max load: 30 kg

Material: HDPE





# PG H-12

## Holland crate

H-12 Holland Crate (550x375x150 mm) made from durable PO regranulate or HDPE provides secure, efficient handling of fruit and vegetables during harvesting, transport, and storage. Its robust construction, easy cleaning, stackable design, and full cross-compatibility within reusable pooled systems support reliable, space-efficient, circular-economy operation.



Truck:	mega H=3.05m  	
Stack:	80 pcs	80 pcs
Stack height:	2902 mm <small>on pallet 1200x800x130 mm</small>	2902 mm <small>on pallet 1200x800x130 mm</small>
Truck capacity:	2720 pcs	3040 pcs

### STANDARD COLORS



\*As option any standard RAL color

### SPECIFICATIONS

Dimensions: 550x375x150 mm (±5 mm)

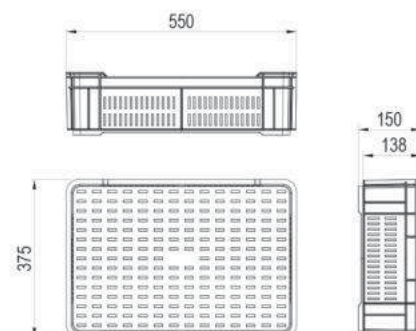
Stacking height: 138 mm

Weight: 1.15 kg ± 3%

Volume: 30 lit

Max load: 10-14 kg

Material: r-PO or HDPE



# PG B-6

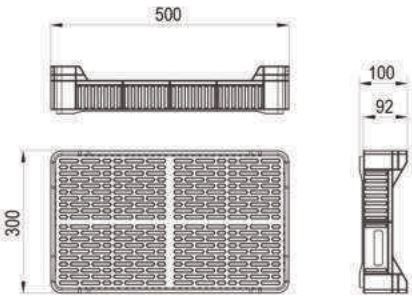
## Blueberry Crate



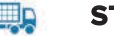
B-6 Blueberry Crate (500×300×90 mm, usable height 60 mm) provides stable, space-efficient handling of up to 8 kg of fresh blueberries. Its durable PO regranulate or HDPE construction, impact and UV resistance, easy cleaning, and full cross-compatibility within reusable pooled systems ensure reliable performance in modern circular-economy harvest and transport operations.




### SPECIFICATIONS

- Dimensions: 500×300×90 mm (±5 mm)
- Usable height: 60 mm
- Stacking height: 92 mm
- Weight: 470 gr ± 3%
- Max load: 8 kg
- Material: r-PO or HDPE



Truck:	mega H=3.05m   	
Stack:	240 pcs on pallet 1200x1000x130 mm	240 pcs on pallet 1200x1000x130 mm
Stack height:	2898 mm on pallet 1200x1000x130 mm	2898 mm on pallet 1200x1000x130 mm
Truck capacity:	6240 pcs	6720 pcs

### STANDARD COLORS

 \*As option any standard RAL color

# PG M-3

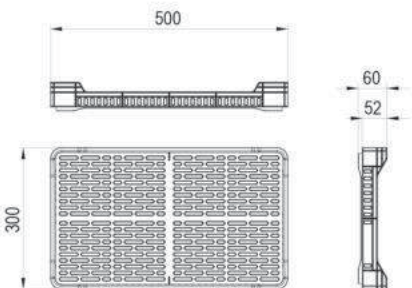
## Raspberry Crate



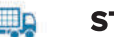
Raspberry Crate (500×300×60 mm, usable height 36 mm) provides stable, space-efficient packing and protection tailored to the specific requirements of raspberries. Its durable construction, optimized ventilation, easy cleaning, and full cross-compatibility within reusable pooled systems support reliable, hygienic, circular-economy handling from harvest to transport.




### SPECIFICATIONS

- Dimensions: 500×300×60 mm (±5 mm)
- Usable height: 36 mm
- Stacking height: 52 mm
- Weight: 380 gr ± 3%
- Max load: 3 kg
- Material: r-PO or HDPE



Truck:	mega H=3.05m   	
Stack:	432 pcs on pallet 1200x1000x130 mm	432 pcs on pallet 1200x1000x130 mm
Stack height:	2946 mm on pallet 1200x1000x130 mm	2946 mm on pallet 1200x1000x130 mm
Truck capacity:	11232 pcs	12096 pcs

### STANDARD COLORS

 \*As option any standard RAL color



# Round vats

Liquid



Oenology



Household



Industry

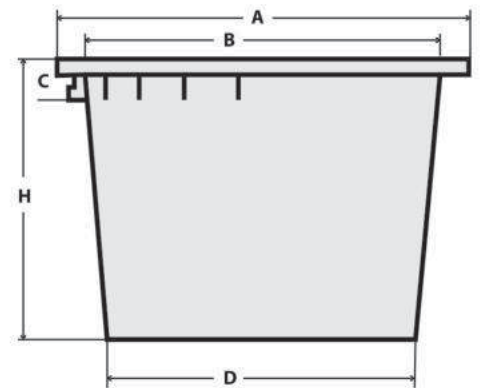


Fruit picking



Vats for fruit, enological and industrial use, suitable to handle and easy to maintain.

Product	Capacity (Lt)	A mm	B mm	C mm	D mm	H mm	Weight (kg)
110l	110	805	735	95	680	295	4,1
225l	225	855	785	115	675	545	5,5
275l	275	1085	1015	100	975	355	7,8
350l	350	940	870	80	720	705	8,9
500l	500	1045	975	62	830	800	11,2
700l	700	1150	1090	95	930	885	17,8
1000l	1000	1325	1225	175	1100	940	24,7



**110l**

↔ 805 x 295 x 680 mm

🎨 black, wine red, white



Other colors on request.



**225l**

↔ 855 x 545 x 675 mm

🎨 black, wine red, white



Other colors on request.



**275l**

↔ 1085 x 355 x 975 mm

🎨 black, wine red, white



Other colors on request.

# Round vats



**350I**

↔ 940 x 705 x 720 mm

🎨 black, wine red, white



*Other colors on request.*



**500I**

↔ 1045 x 800 x 830 mm

🎨 black, wine red, white



*Other colors on request.*



**700I**

↔ 1150 x 885 x 930 mm

🎨 black, wine red, white



*Other colors on request.*



**1000I**

↔ 1325 x 940 x 1100 mm

🎨 black, wine red, white



*Other colors on request.*



**Lid for round vat  
500I**

↔ 1045 mm

🎨 black, wine red, white



*Other colors on request.*



**Lid for round vat  
700I**

↔ 1150 mm

🎨 black, wine red, white



*Other colors on request.*

# Round vats



**100I**

↔ 680 x 520 mm

🔴 green, white



*Other colors on request.*



**200I**

↔ 790 x 680 mm

🔴 green, white



*Other colors on request.*



**140I**

↔ 775 x 740 x 550 mm

🔴 red, green, blue



*Other colors on request.*



**Lid for round vat  
100I**

↔ 530mm

🔴 green, white



*Other colors on request.*



**Lid for round vat  
200I**

↔ 690 mm

🔴 green, white



*Other colors on request.*



**UNI Crate**

↔ 500 x 340 x 270 mm

🔴 white, mint green



*Other colors on request.*







# PlastikGogić

MNG Plastik Gogić doo Indjija  
22320 Indjija, Kralja Petra I 227, SERBIA  
+381 (22) 561-674 ; 555-306

office@plastikgogic.rs  
www.plastikgogic.rs

